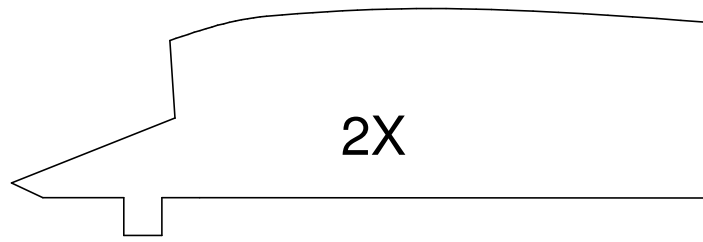
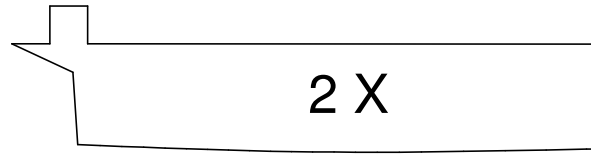


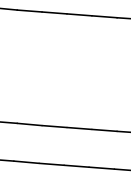
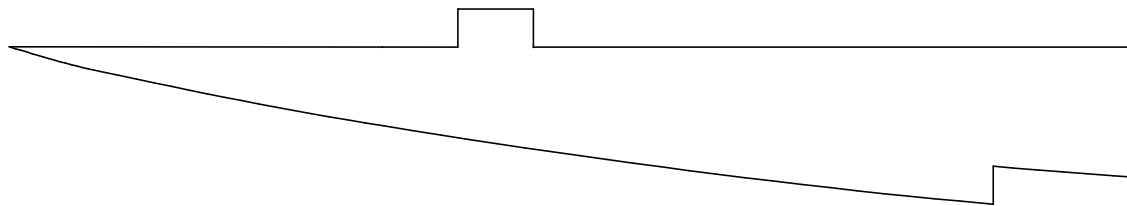
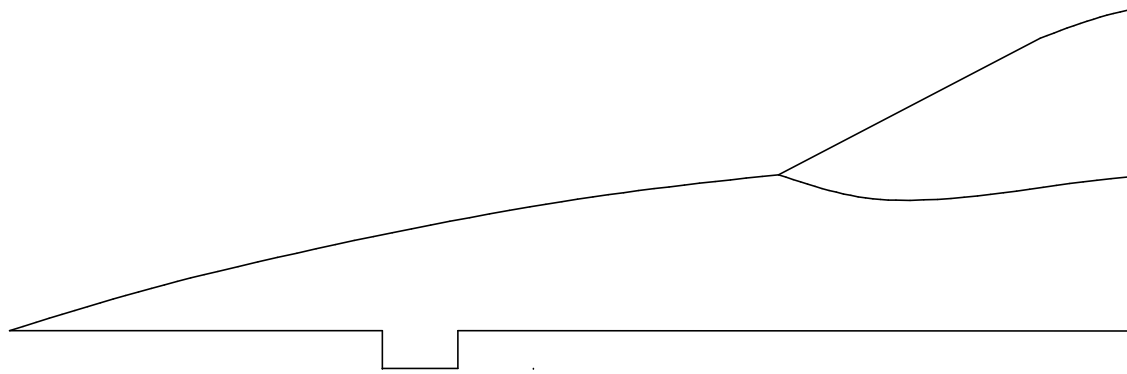
5 MM X 5 MM HARD BALSA



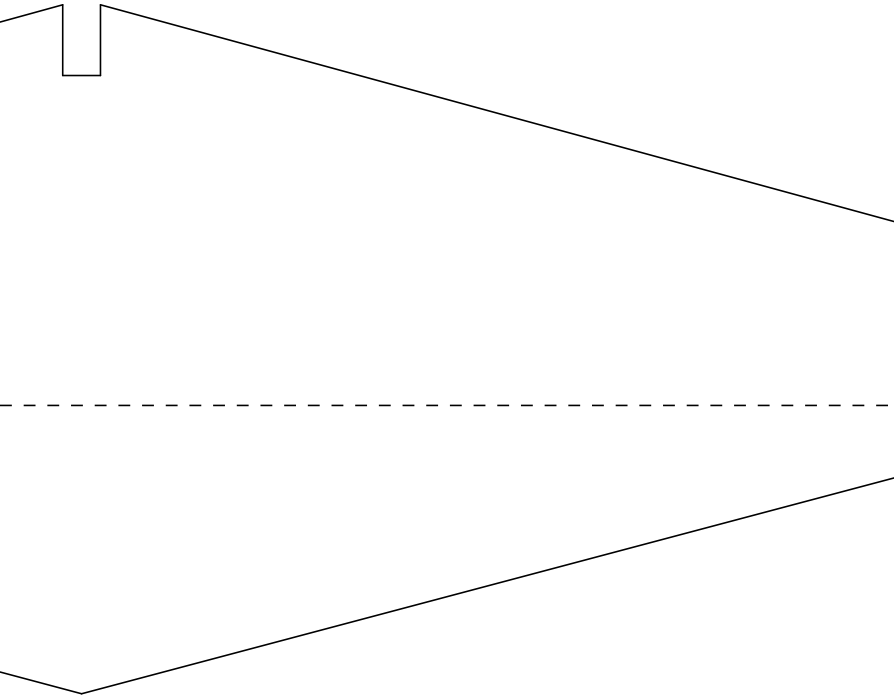
2X



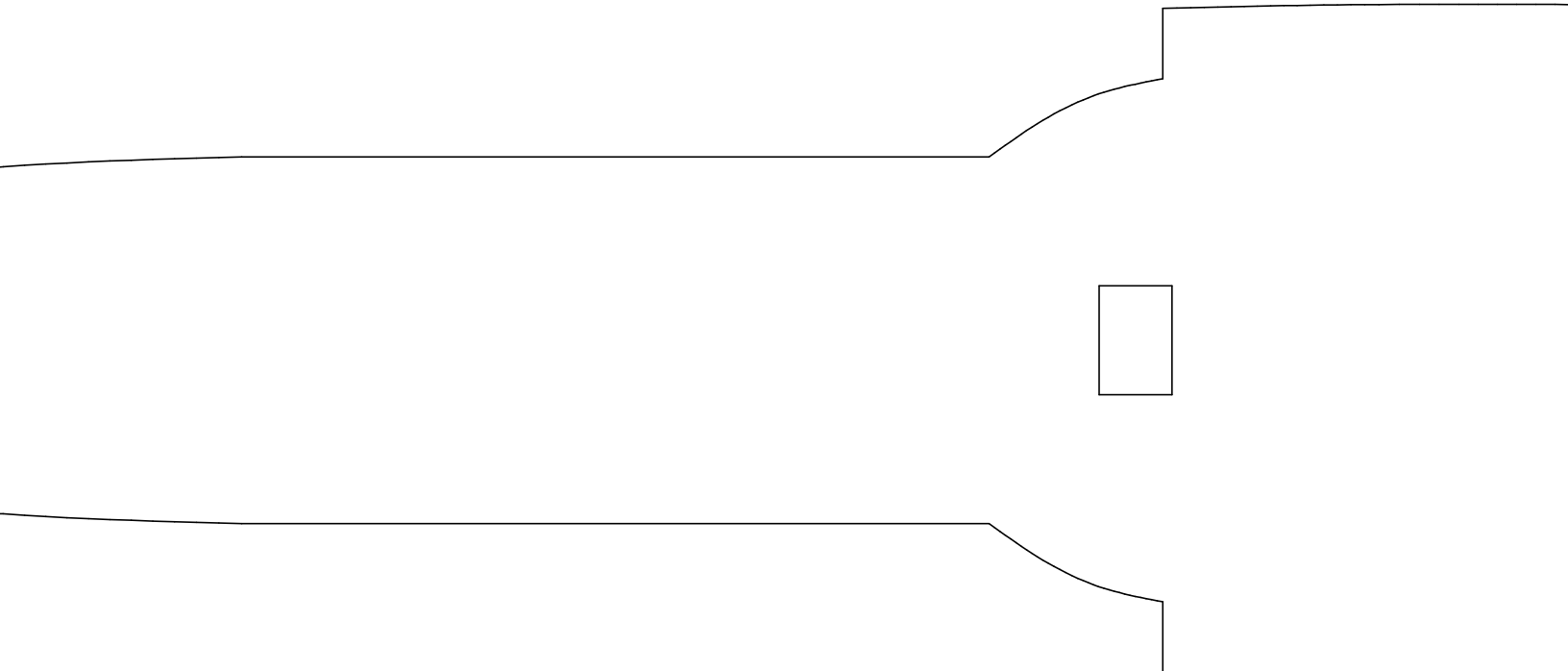
2X

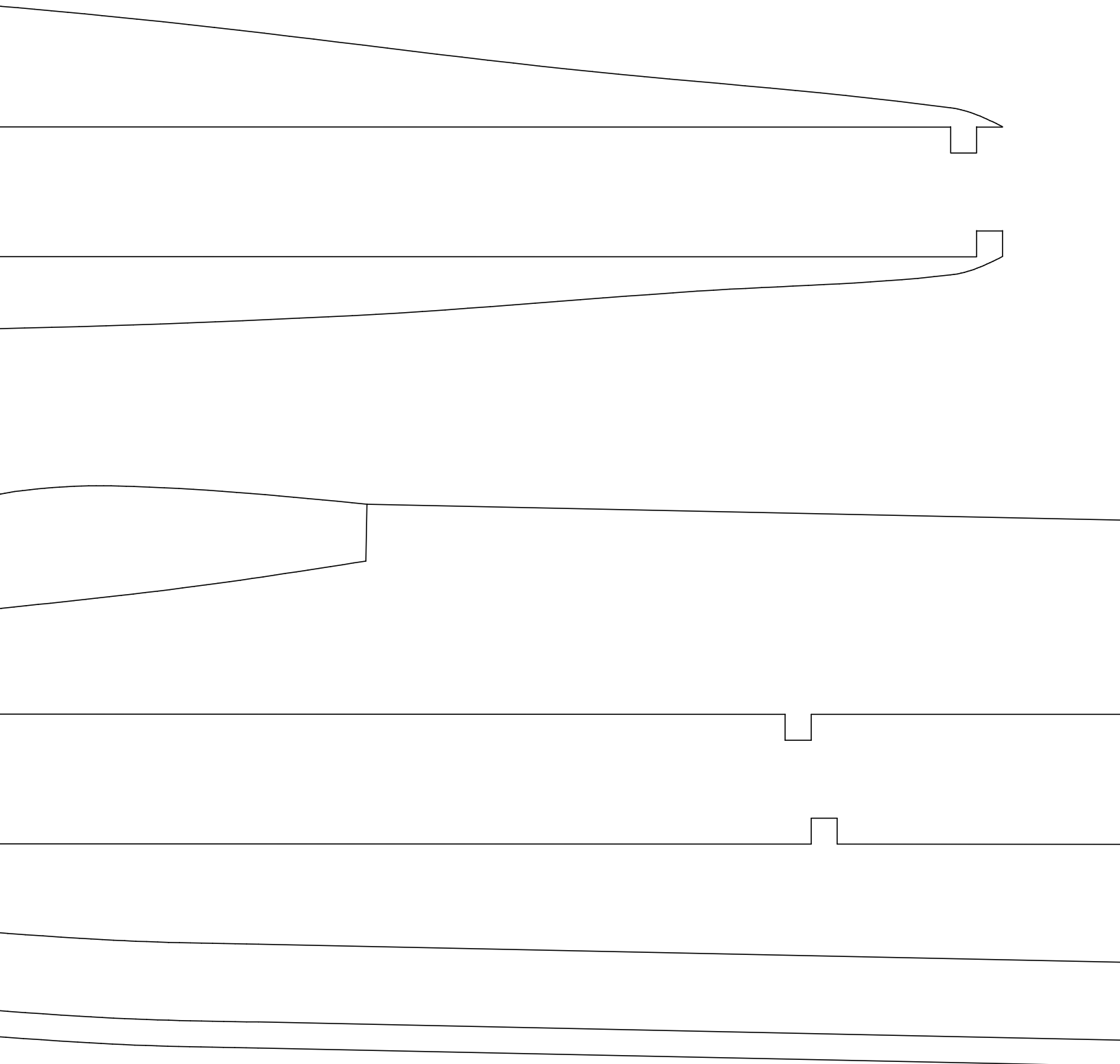


5 MM X 5 MM HARD BA



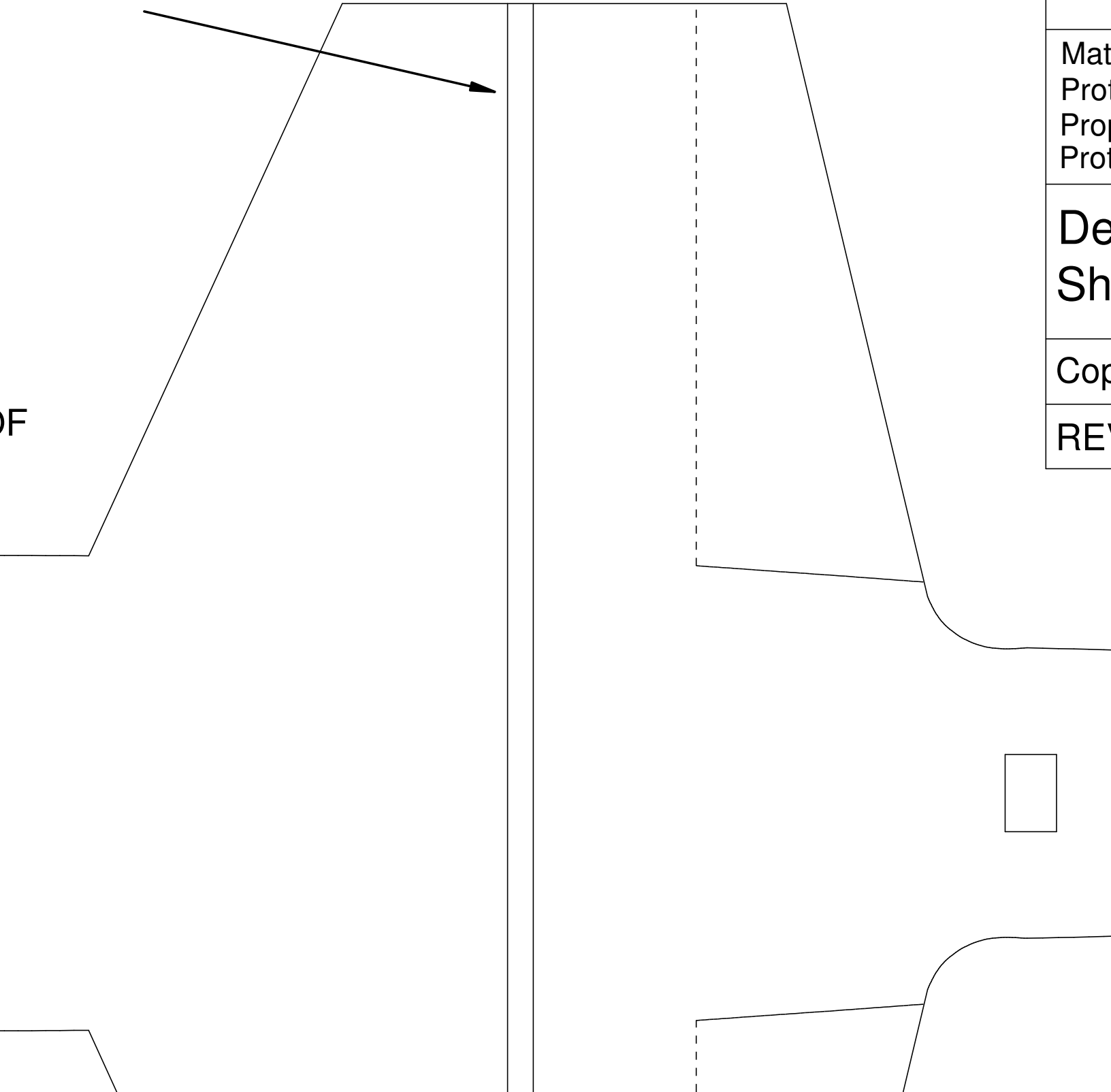
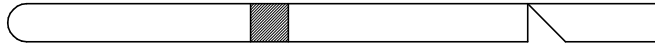
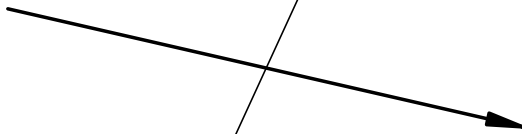
ONLY ROUND OFF  
LEADING EDGES OF  
WINGS, FIN AND  
STABILIZER!





5 MM X 5 MM HARD BALSA

ALSA MAIN SPAR



**F**

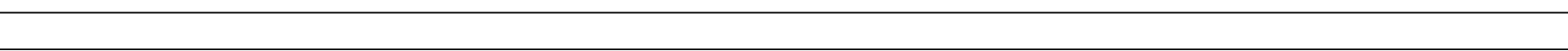
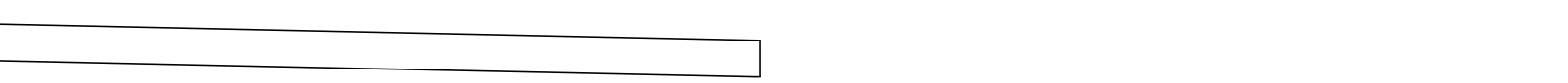
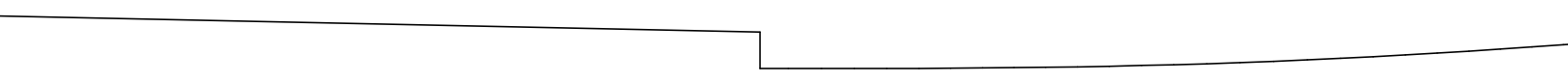
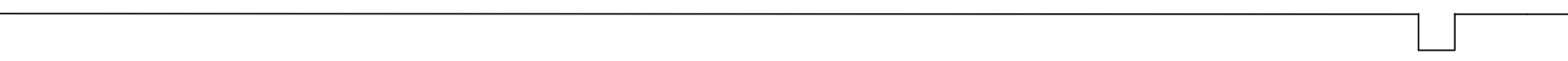
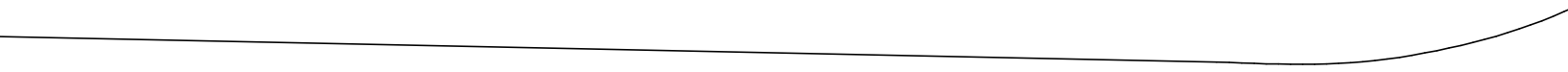
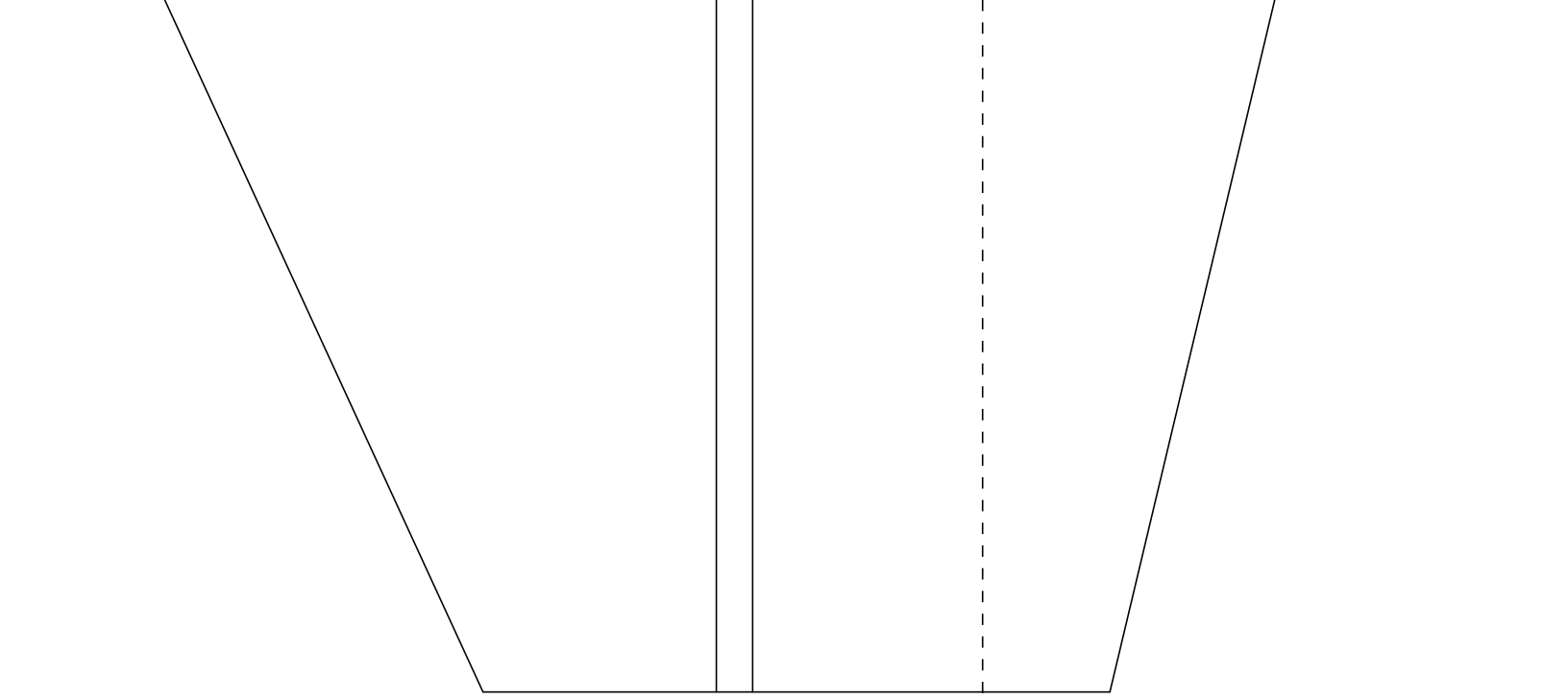
Mat  
Pro  
Pro  
Pro

De  
Sh

Cop

RE





# F-104 Starfighter

Material: 5 mm Depron®

Prototype Power: CD-Rommotor 14-turn 0.4 mm + LiPo 3s700 E-Tech

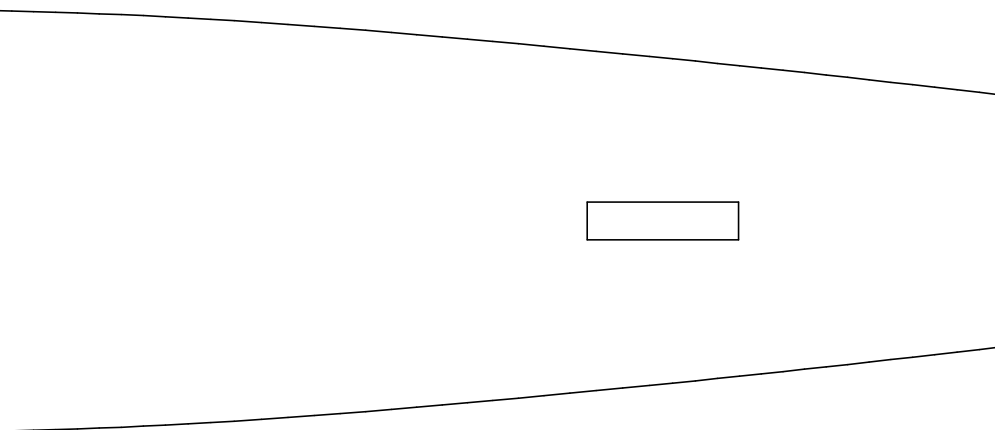
Propeller: Gunther 125 x 110

Prototype RTF Weight: 165 grams

Design and Drawing: Willem Bravenboer  
Sheet #1: Parts

Copyright 2007 Willem Bravenboer

VISION V 1.0



SIZE CHECK

