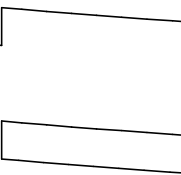
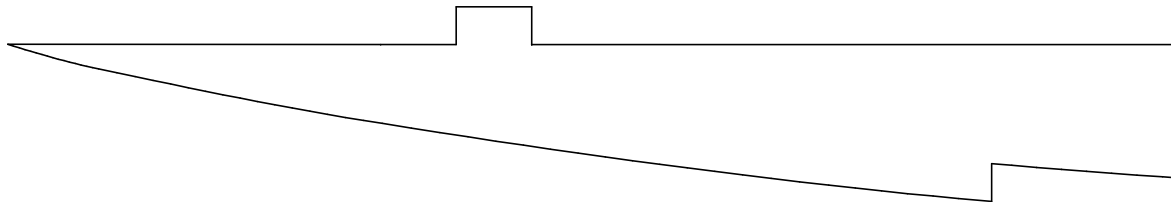
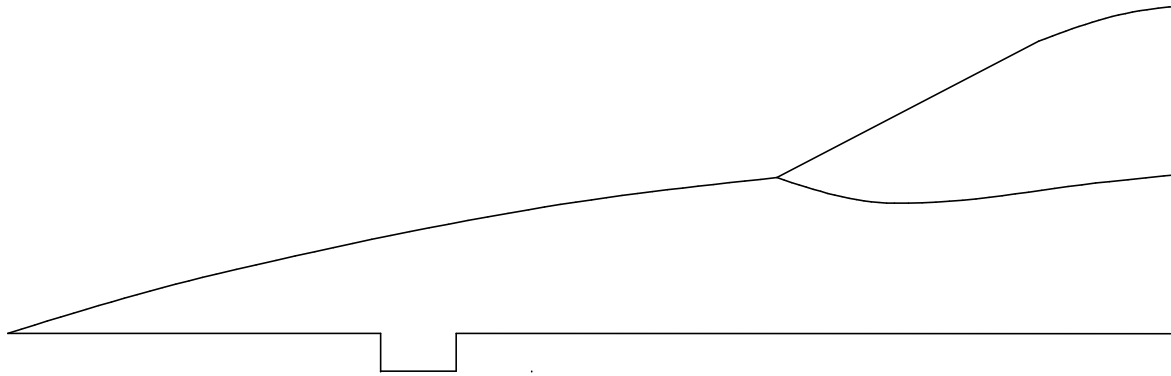
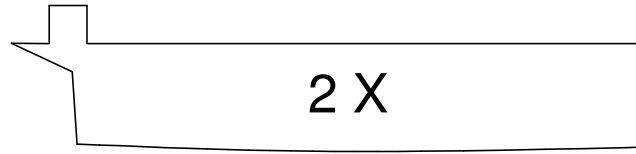
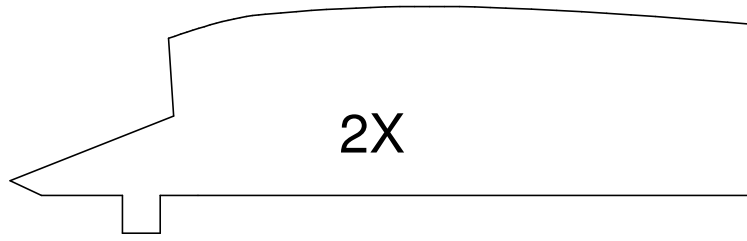
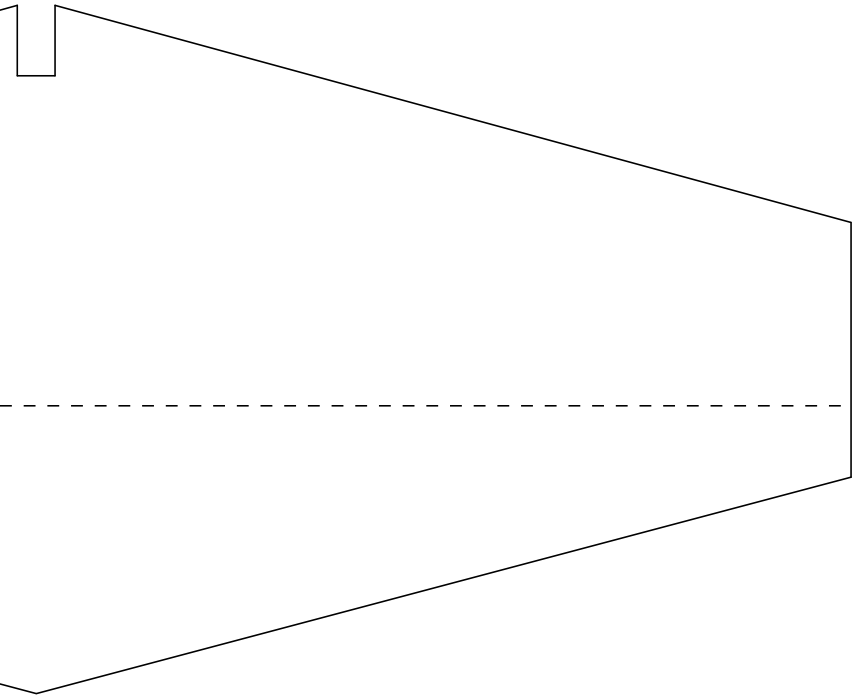


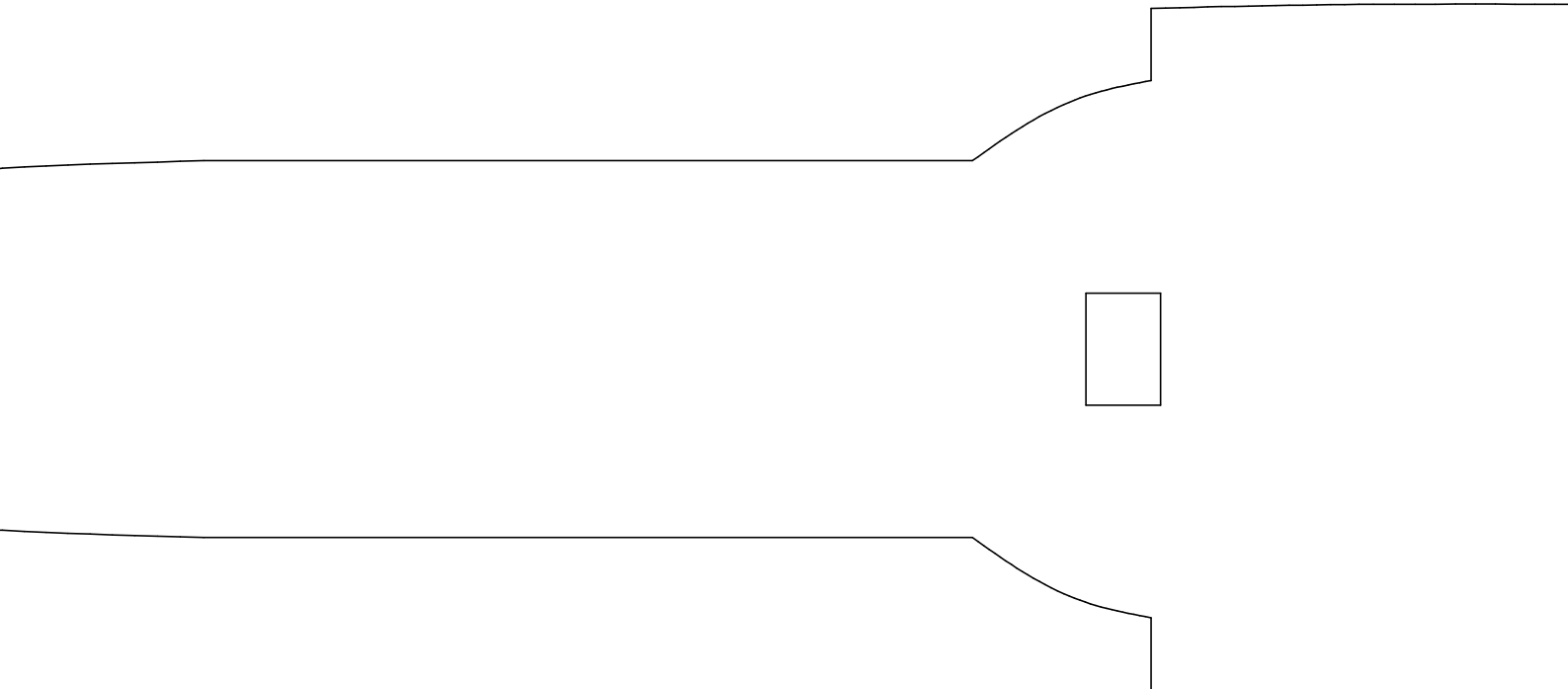
5 MM X 5 MM HARD BALSA

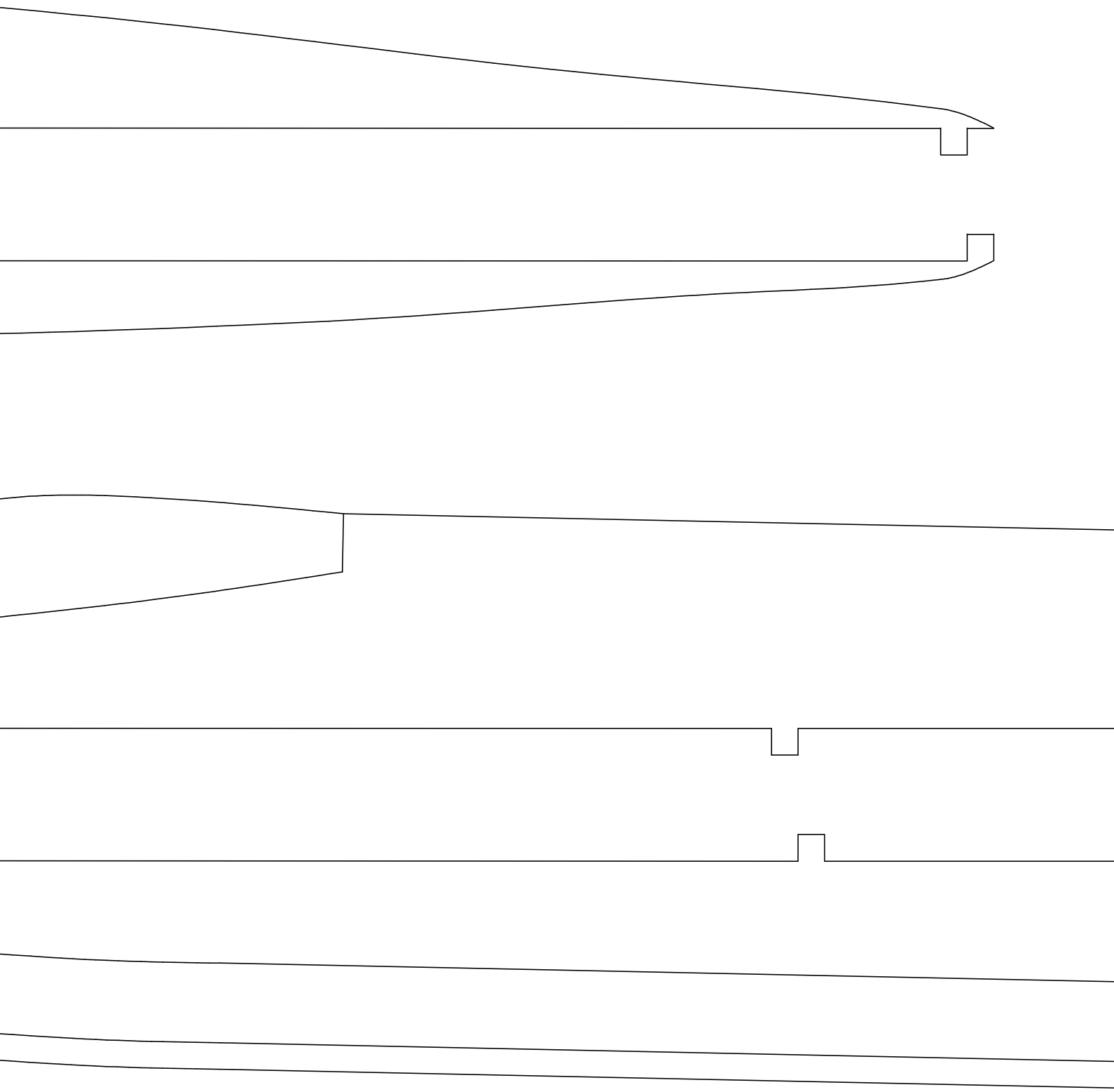


5 MM X 5 MM HARD BA



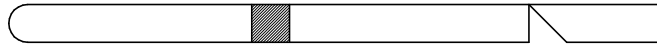
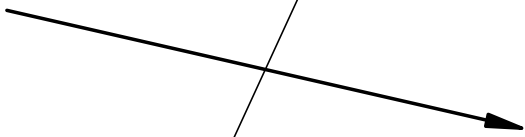
ONLY ROUND OFF
LEADING EDGES OF
WINGS, FIN AND
STABILIZER!





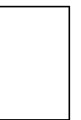
5 MM X 5 MM HARD BALSA

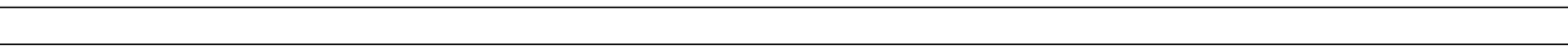
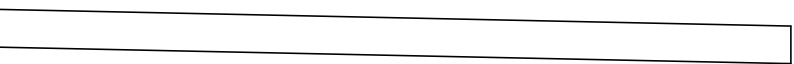
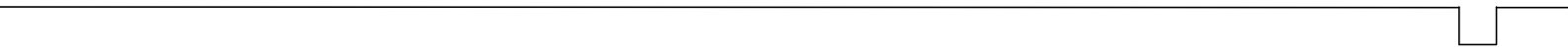
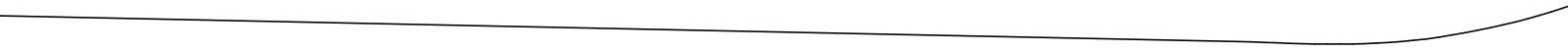
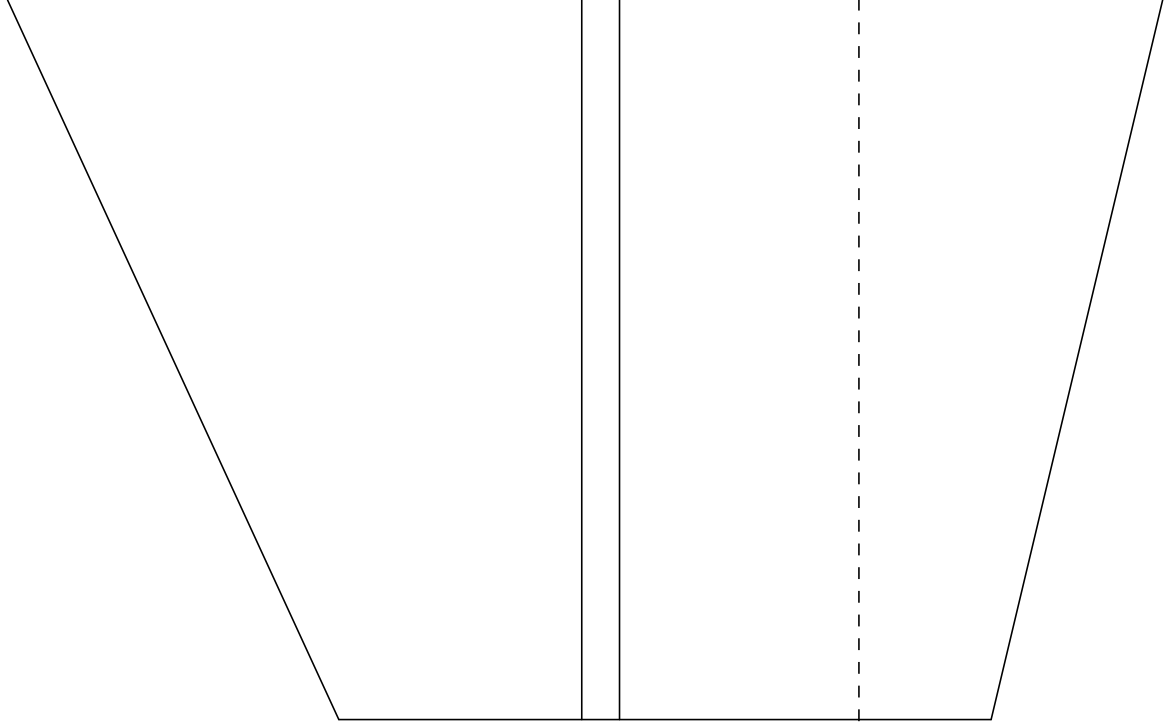
ALSA MAIN SPAR



DF

M
P
P
P
D
S
C
R





F-104 Starfighter

Material: 5 mm Depron®

Prototype Power: CD-Rommotor 14-turn 0.4 mm + LiPo 3s700 E-Tech

Propeller: Gunther 125 x 110

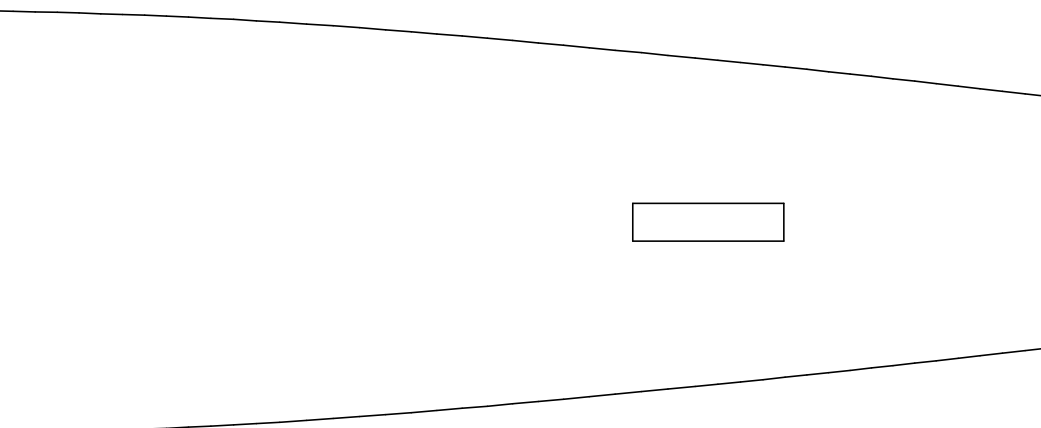
Prototype RTF Weight: 165 grams

Design and Drawing: Willem Bravenboer

Sheet #1: Parts

Copyright 2007 Willem Bravenboer

REVISION V 1.0



SIZE CHECK

