

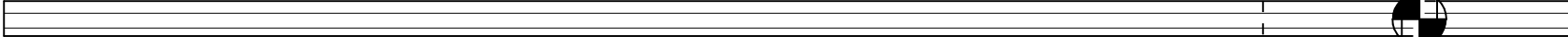
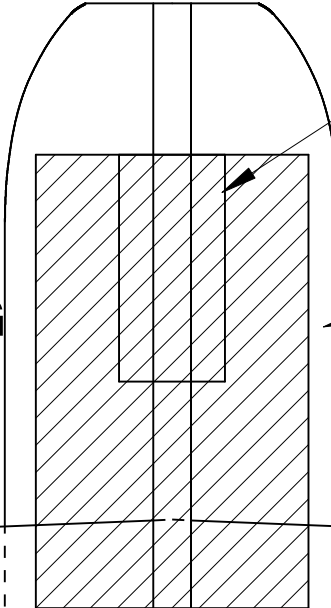


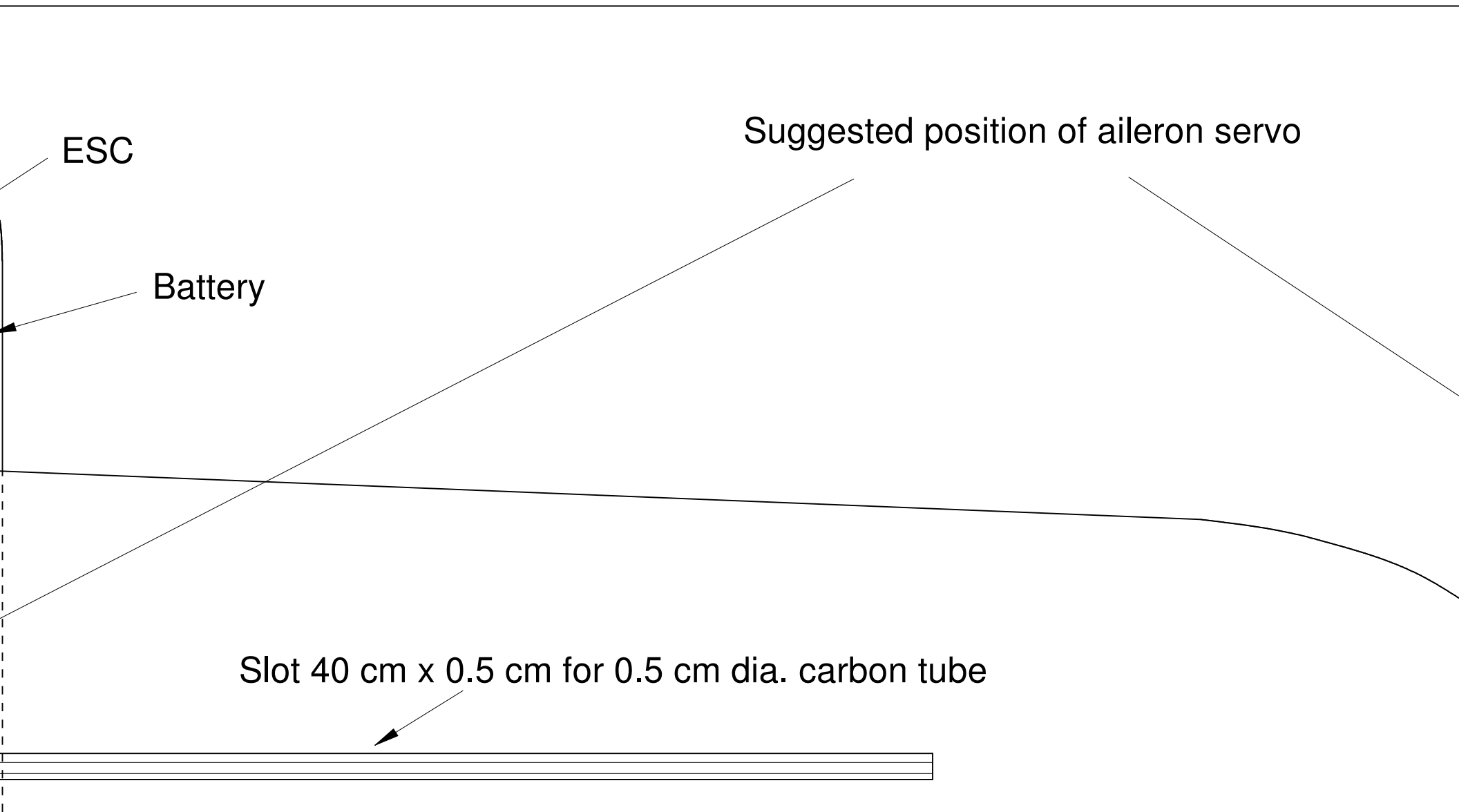
age Pattern

Motor

Battery position to suit C of G

C of G range is from carbon tube position to 2 cm in front of it

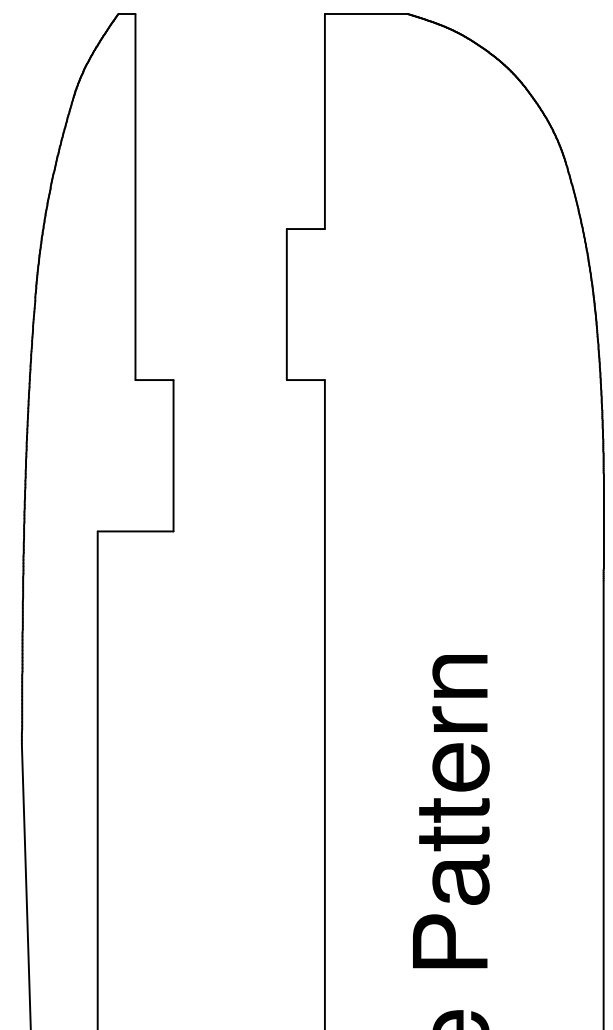
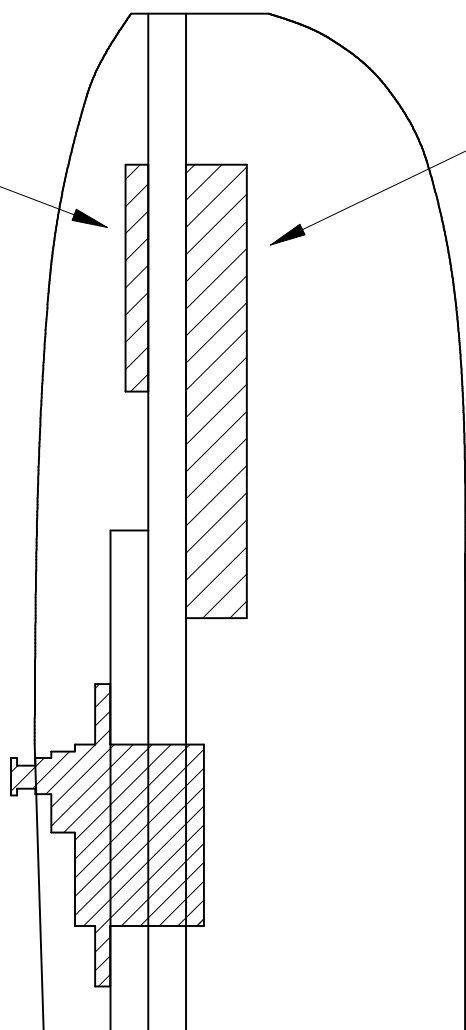




Motor

ESC

Battery

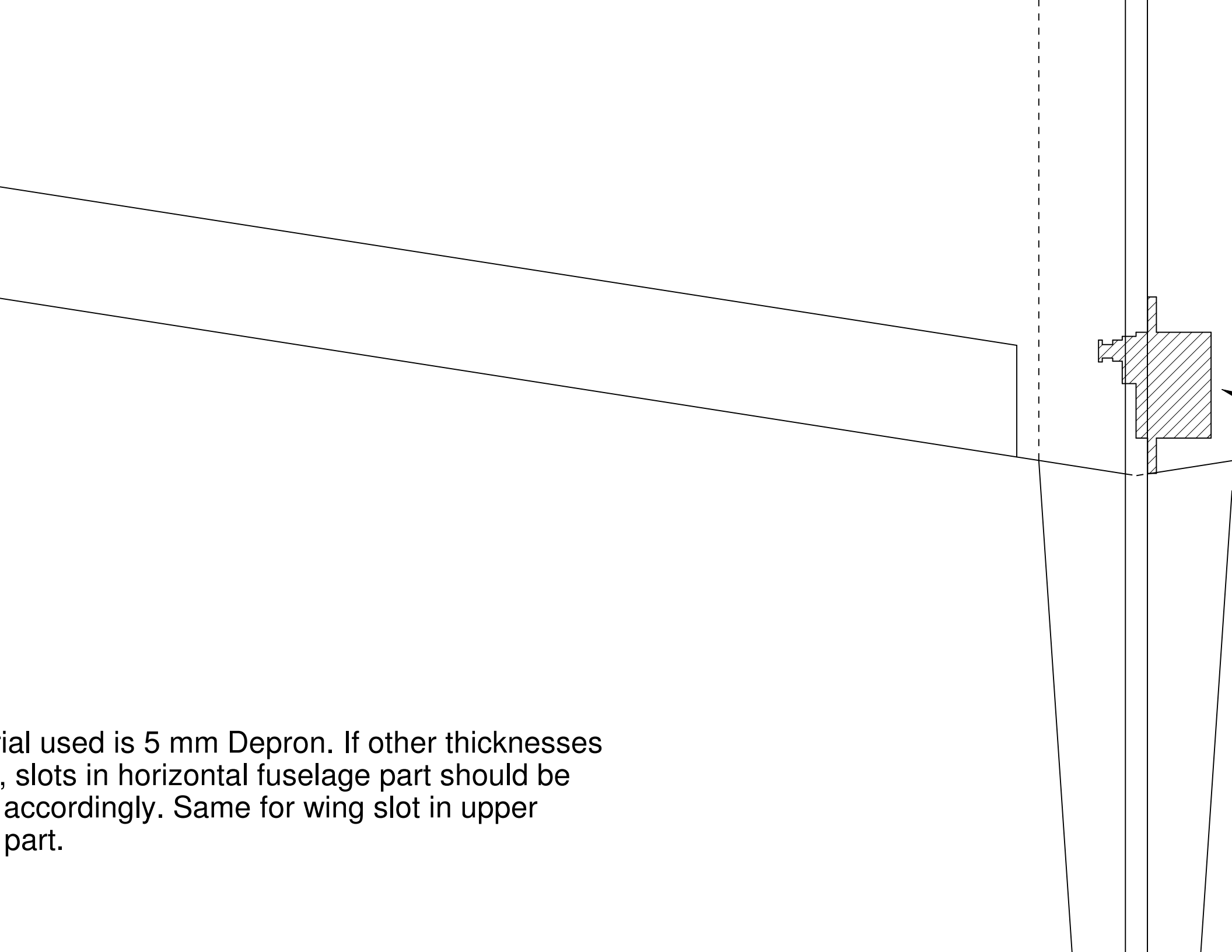


e Pattern

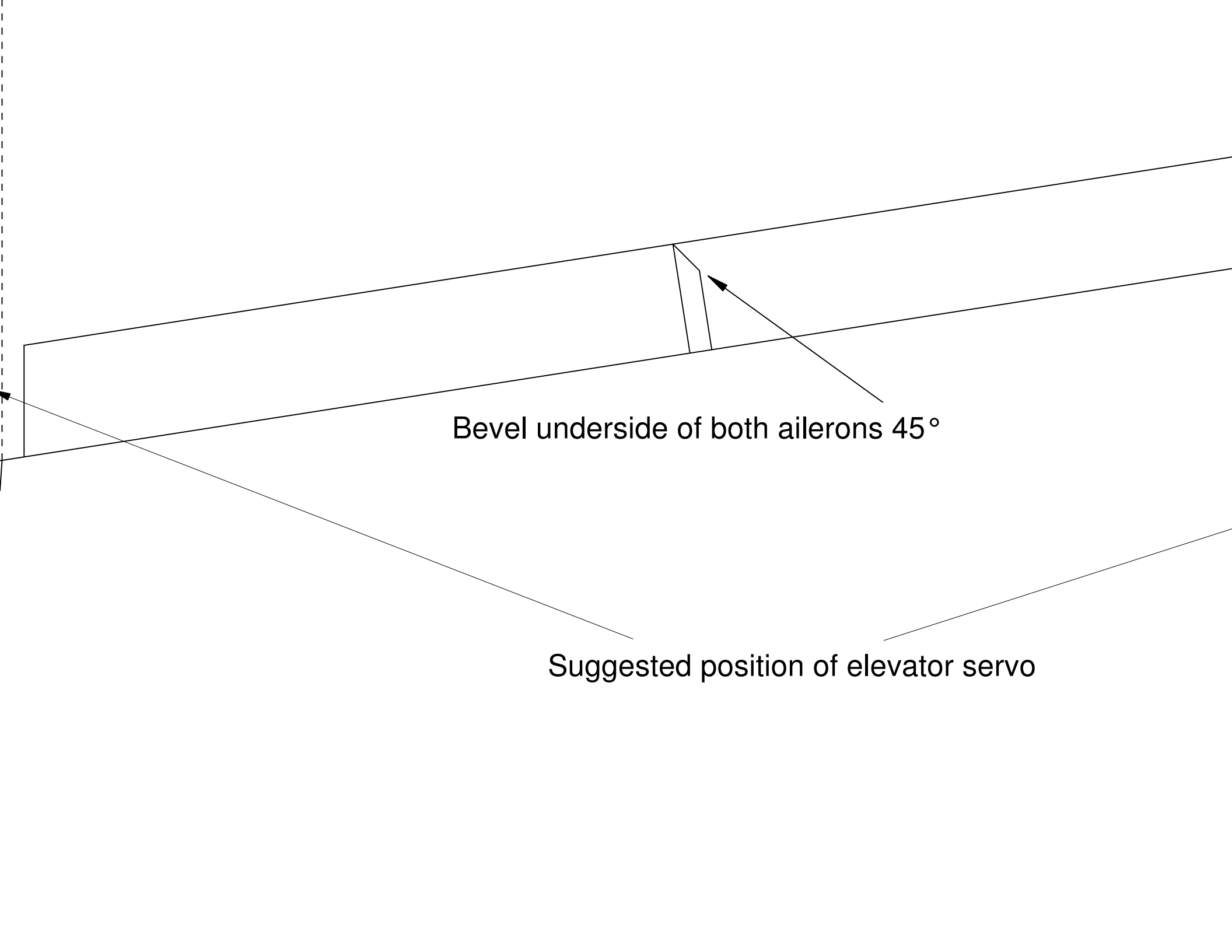


Horizontal Fuselage

All mater
are used
adjusted
fuselage

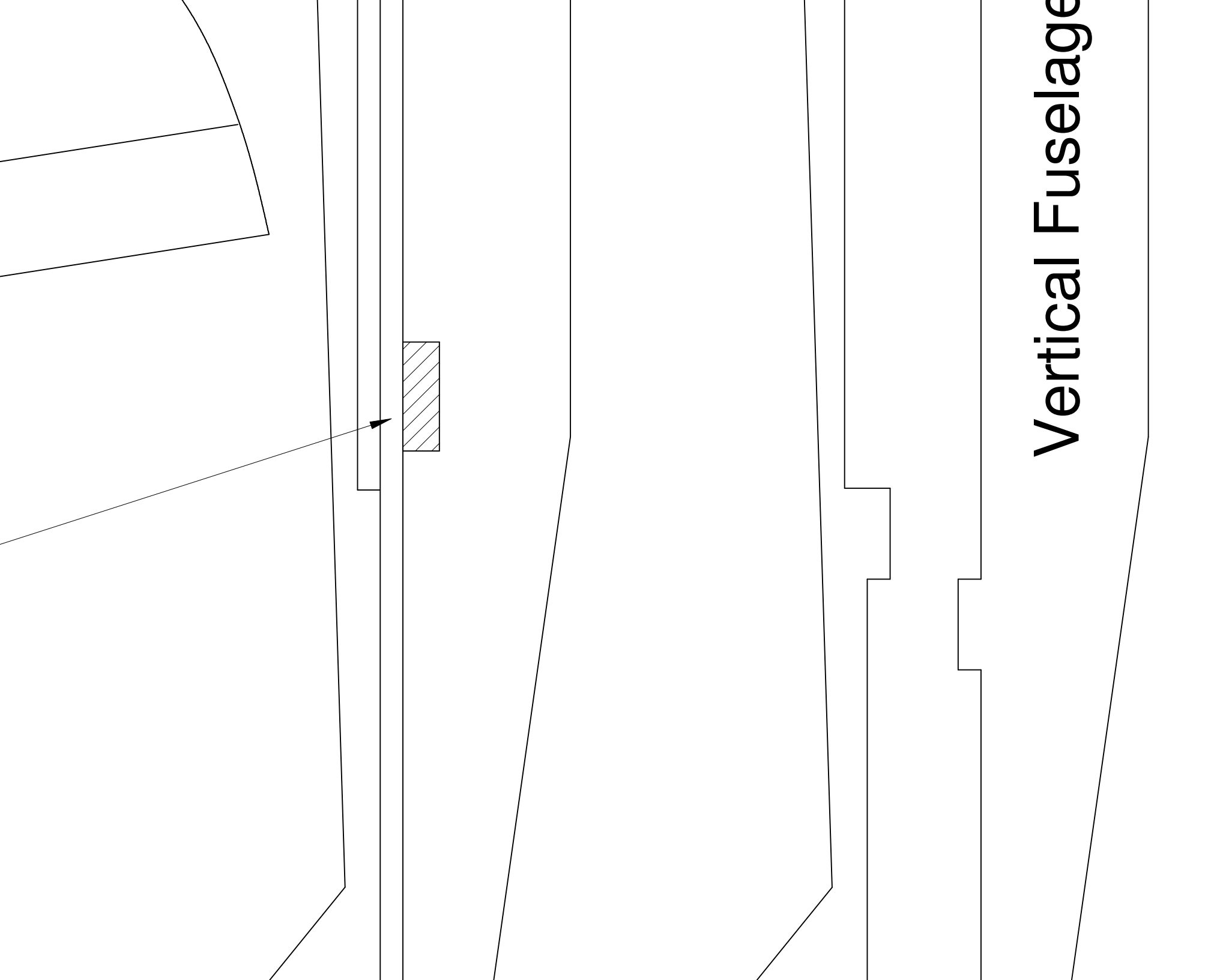


Material used is 5 mm Depron. If other thicknesses are used, slots in horizontal fuselage part should be made accordingly. Same for wing slot in upper part.

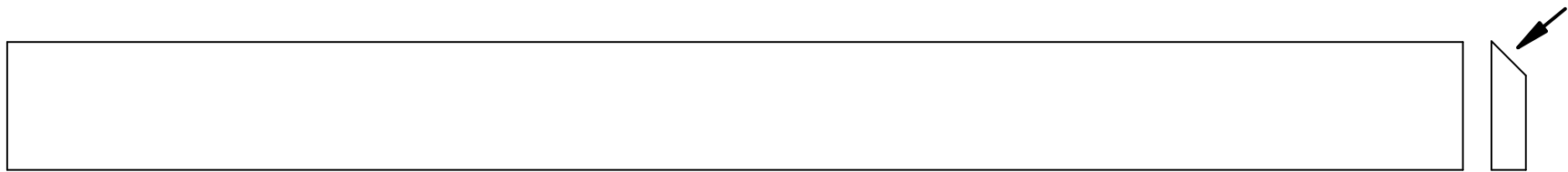
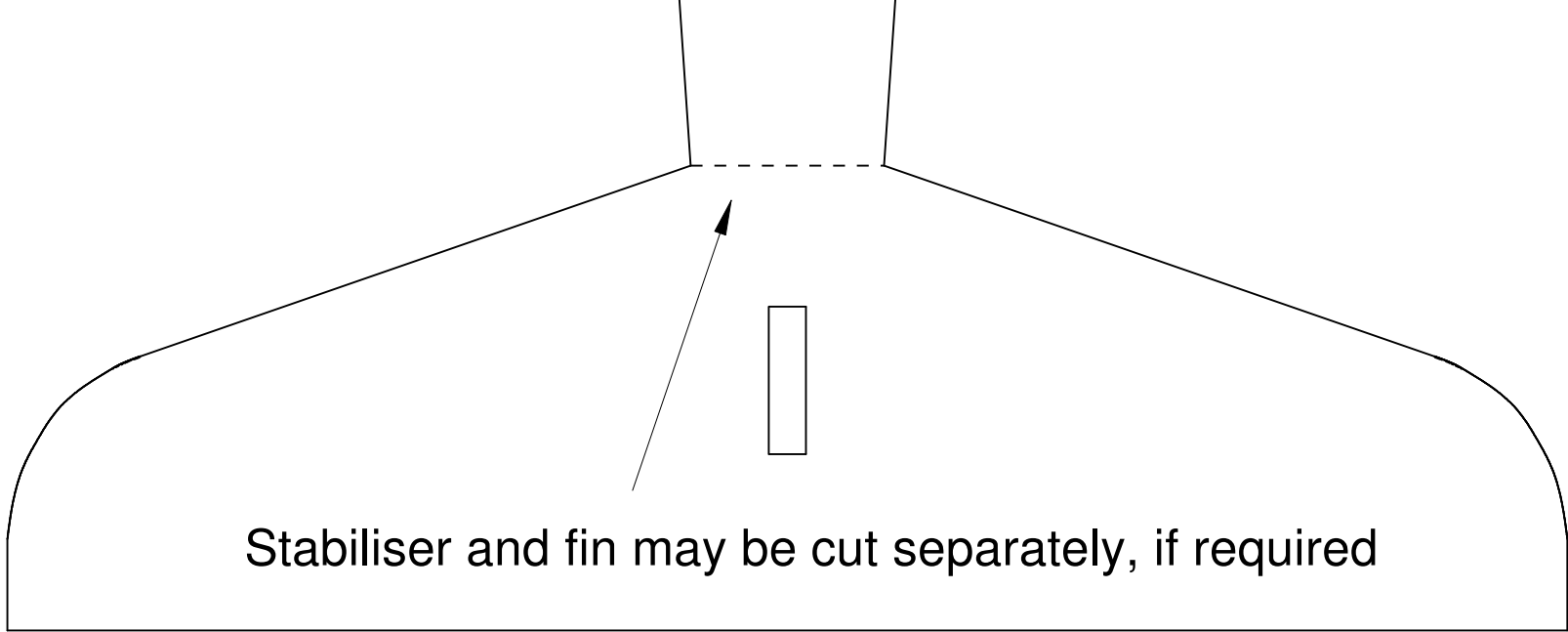


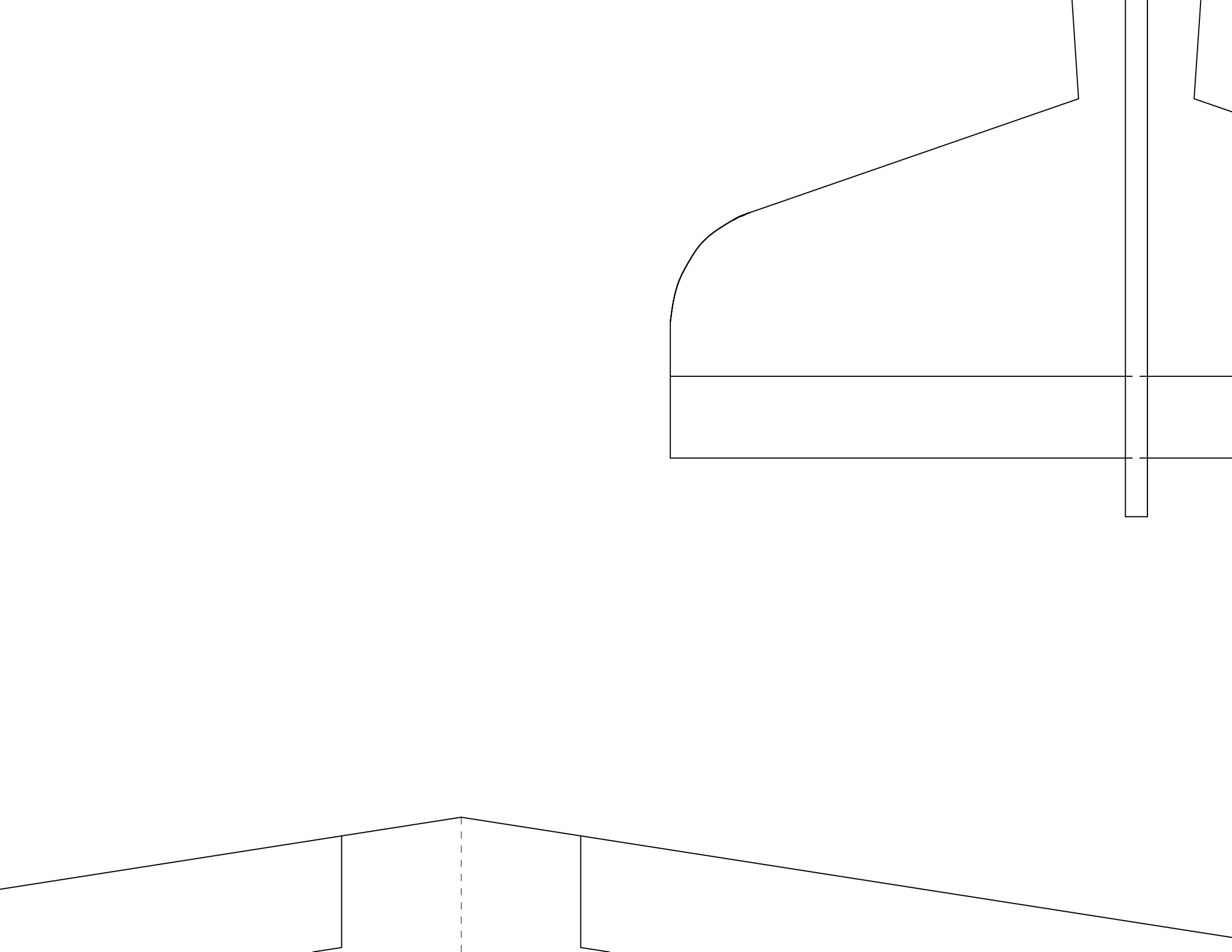
Bevel underside of both ailerons 45°

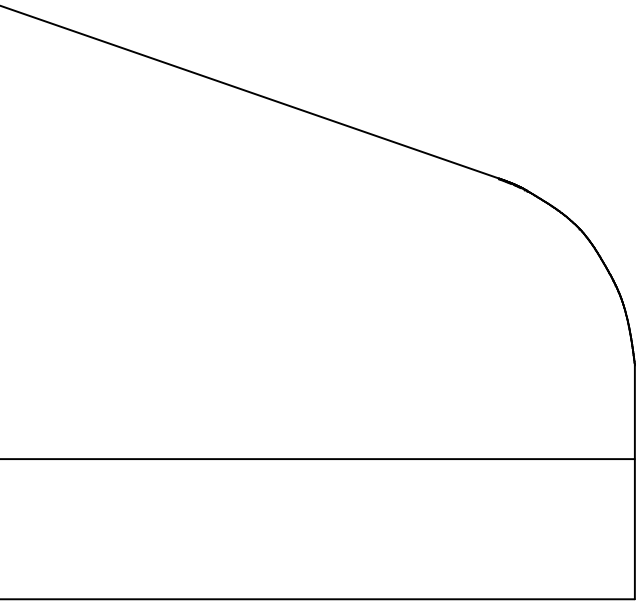
Suggested position of elevator servo



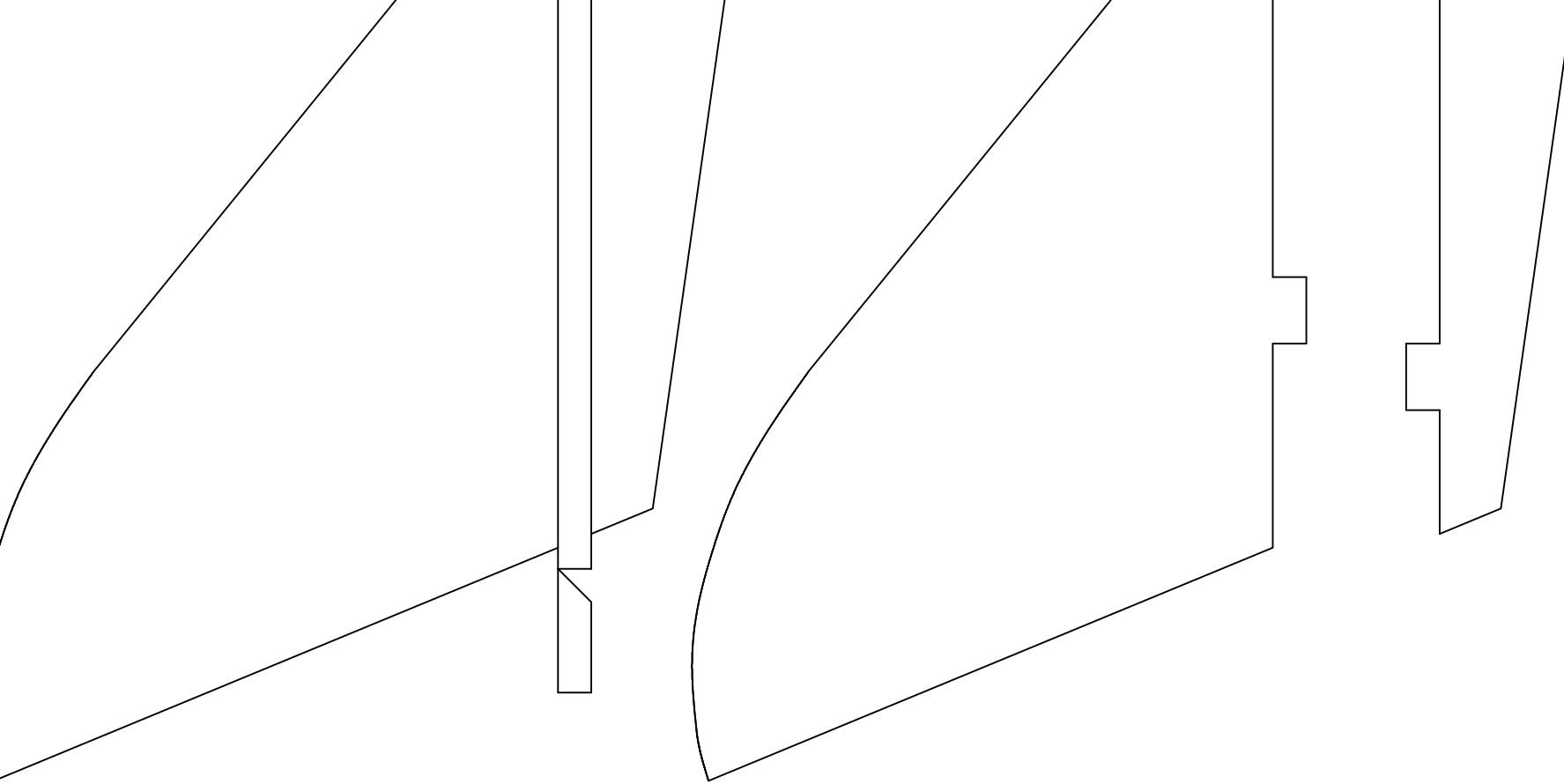
Vertical Fuselage



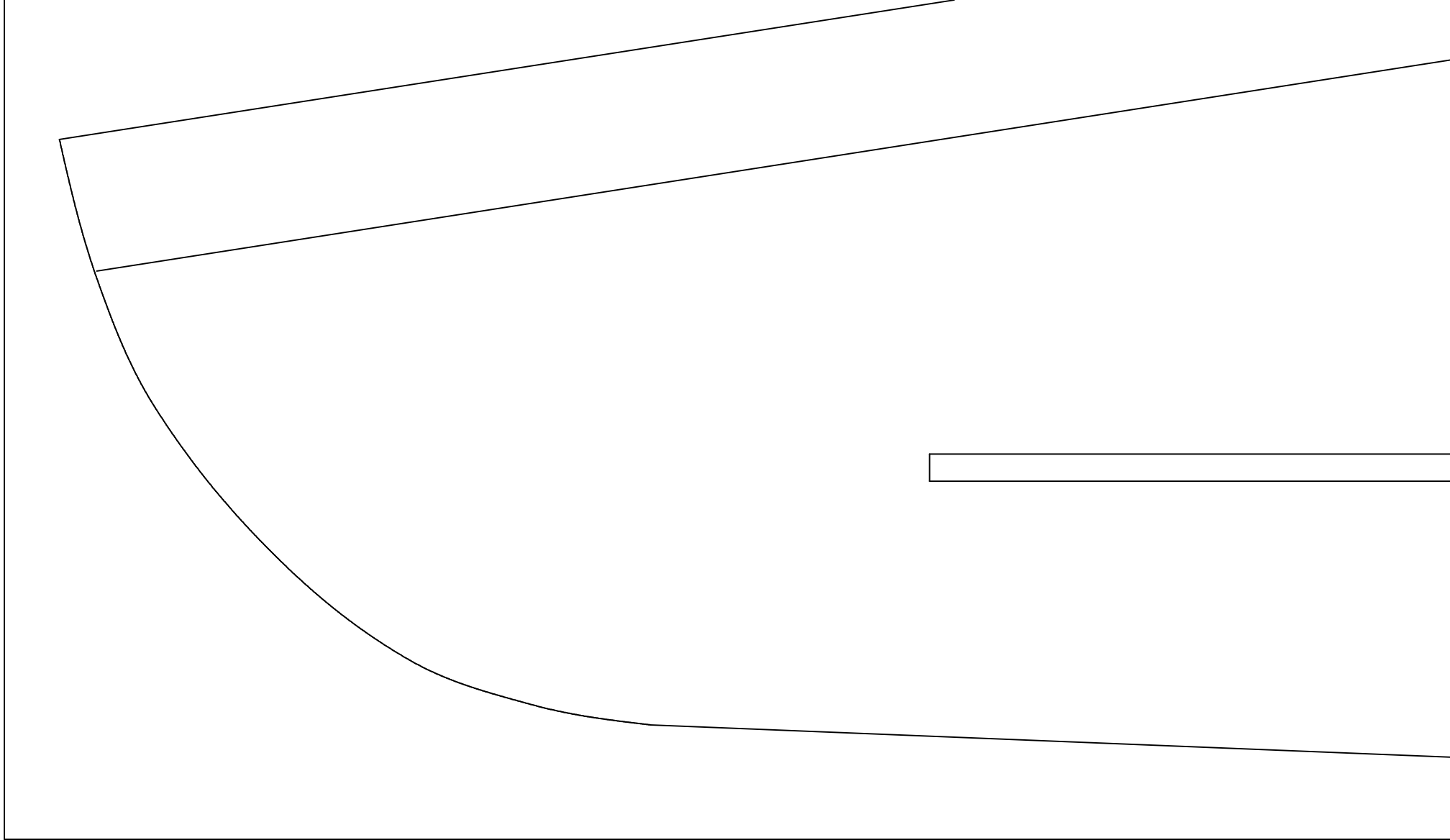




R
R
V
S
t
V
C

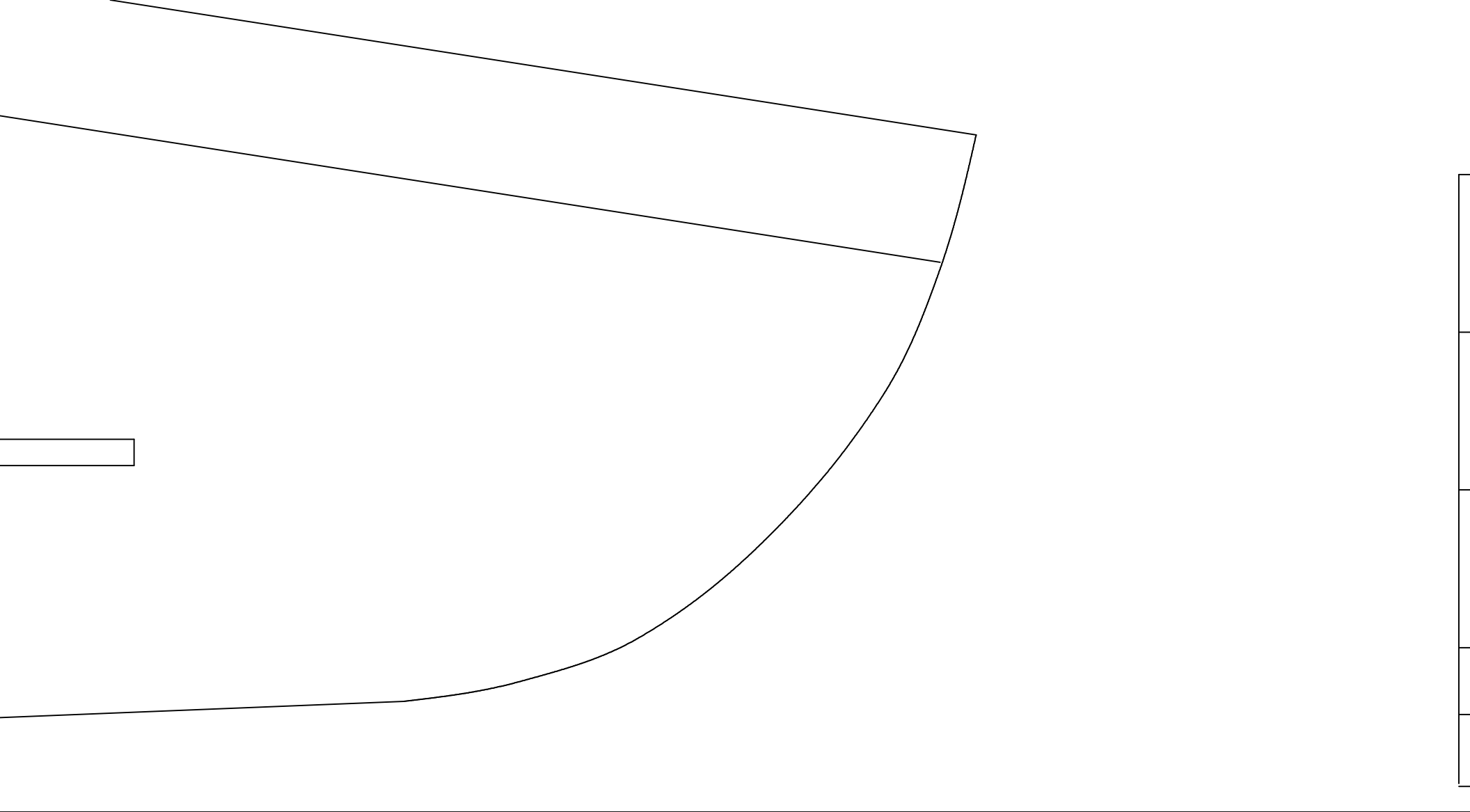


Project Holidep 280 is a further development of the IMA Holiday 280. This plan is intended to be a guide to building a number of versions, many variations are possible: made of 5 or 6 mm depron® the Holidep 280 is sturdy enough to be powered in the 100 Watt (or plus) range, the other end of the scale being an all 3mm depron® version setup with a motor in the 20-30 Watt range. Instead of the flat -plate profile one of the Kline-Fogleman profiles could be used.



The image shows a diagram of a wing pattern. It consists of a vertical dashed line that runs from the top to the bottom of the page. Two horizontal solid lines cross this dashed line. The top horizontal line is positioned in the upper third of the page, and the bottom horizontal line is positioned in the lower third. The text "Wing Pattern" is located in the upper right quadrant, to the right of the vertical dashed line and above the top horizontal line.

Wing Pattern



Project Holidep 280

Material: 5 mm Depron®

Power: From CD-Rommotor 14turn 0.4 mm or equivalent to 150 W brushless

Propeller: Gunther 125 x 110 for CD-Rom motor; propeller to suit larger motors

Recommended RTF Weight: 100 - 200 grams

Design and Drawing: Willem Bravenboer
Depron® 5 MM used on prototype

Copyright 2008 Willem Bravenboer

REVISION V 1.1 2008-07-28