

CONN1 X-AXIS  
Pin2 Step  
Pin3 Dir

CONN2 Y-AXIS  
Pin4 Step  
Pin5 Dir

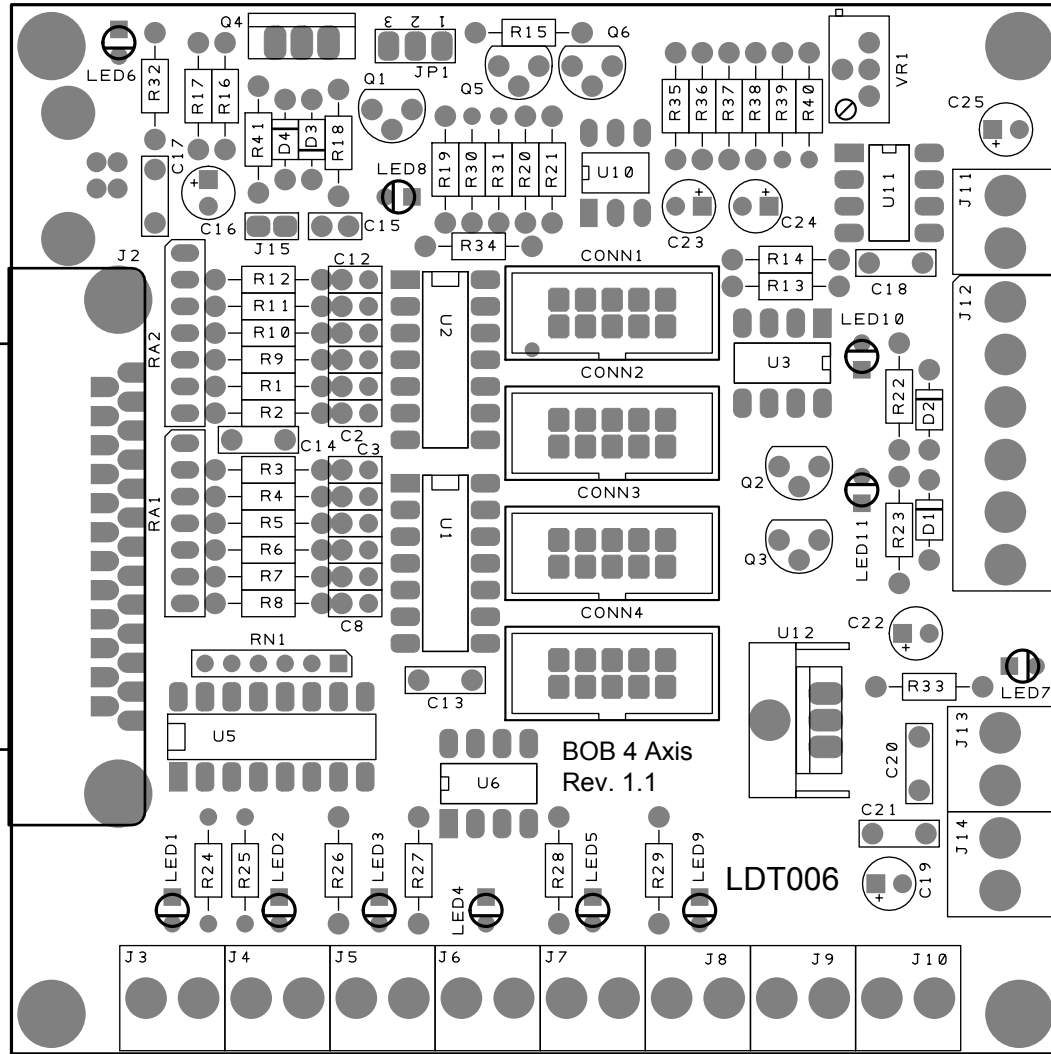
CONN3 Z-AXIS  
Pin6 Step  
Pin7 Dir

CONN4 A-AXIS  
Pin8 Step  
Pin9 Dir

JP1 jumper on pins 1-2: Drives needs enable signal active.  
JP1 jumper on pins 2-3: Drives needs enable signal non-active.

Jumper setting JP2 (marked JP15):  
OFF: Normal = chargepump enabled  
ON: For testing = chargepump disabled

USB style B connector supplying +5V from PC.



+10V Spindle PWM output (pin 17)  
GND  
+12V Relay 2 output (pin 16)  
GND  
+12V Relay 1 output (pin 14)  
GND  
+12V DC supply output  
GND  
GND DC supply input 15 - 24 VDC  
+

+ - + - + - + - + -  
Input 4 (pin 13) Input 3 (pin 12) Input 2 (pin 11) Input 1 (pin 10) Input 5 (pin 15) Estop input  
+12V GND +12V GND  
DC supply output DC supply output

# 4 AXIS parallel port breakout board